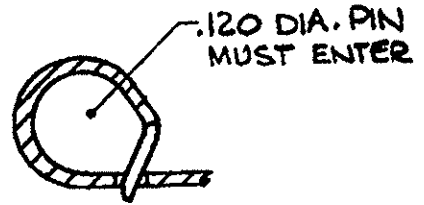
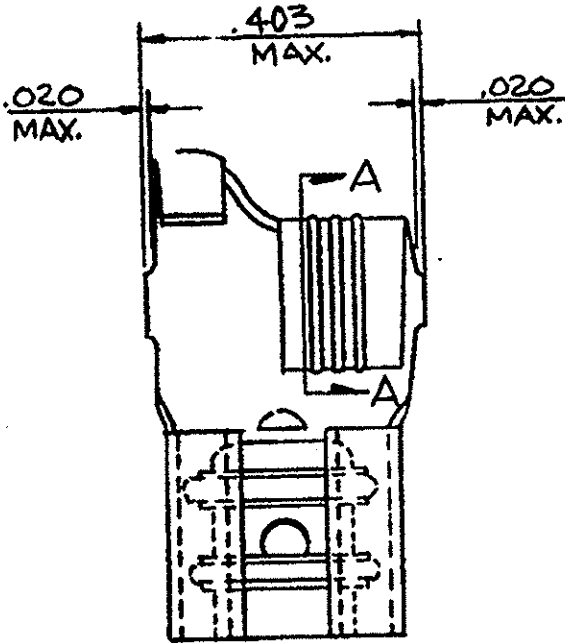


60583



SECT. A-A

- NOTES -

1- REFER TO PART # 42563 FOR ADDITIONAL INFORMATION.

② - #12-#10 A.W.G, LIMITED TO 9,600 CIRCULAR MIL AREA.

WIRE RANGE	INSULATION RANGE	TAB THK ±.001	MATERIAL AND FINISH	COMBINATION NUMBER	REMARKS
12-10	.110 - .210	.032	018-PHOS. BRONZE-SILVER	60583-1(42563-6L.P.)	PRE-FORM ④
			BRASS-TIN	60583-2(42563-2L.P.)	PRE-FORM ③
②	.110 - .210	.032	018-BRASS-SILVER	60583-3(42563-3L.P.)	PRE-FORM ④
	.110 - .210	.032	018-BRASS-TIN	60583-4(42563-2L.P.)	NO PRE-FORM ④

③ FOREIGN PRODUCTION ONLY.

④ OBSOLETE

This terminal to be supplied in individual form, not as continuous strip.

S-26 - PRODUCT ENGINEERING

DIMENSIONS IN INCHES. DO NOT SCALE PRINT.

©1965 BY AMP INCORPORATED. ALL RIGHTS RESERVED. AMP PRODUCTS COVERED BY PATENTS AND/OR PATENTS PENDING.

CUSTOMER COPY REFERENCE ONLY



CLASS #

WIRE RANGE INSULATION TYPE

#

E	ECR-12-013445	KH	PD	24NOV12
STR	REVISION RECORD	DR	CHK	DATE

TOLERANCE EXCEPT AS NOTED ± .018	SCALE ± 1°	4-1	REV E	60583
----------------------------------	------------	-----	-------	-------

NAME: 250 SERIES FLAG FASTON RECEPTACLE

APPROVED: [Signature] DATE: 5/2/12